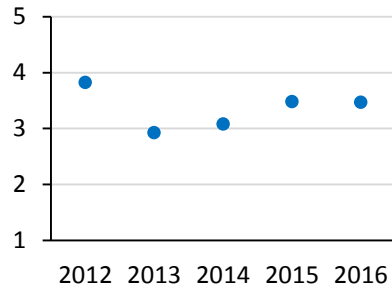
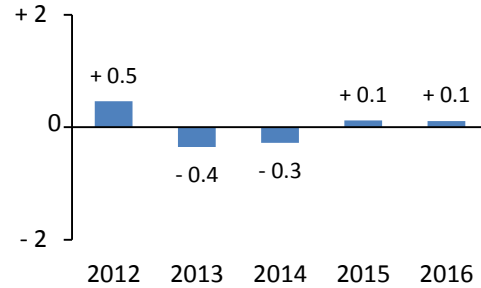


THEORY OF KNOWLEDGE

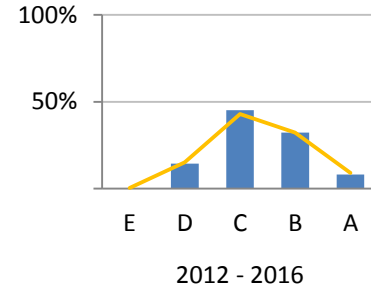
Average Candidate ToK Score



School Average minus World Average



ToK Score Distribution



The yellow line shows the shape of the world-wide score distribution.

Aggregate Statistics

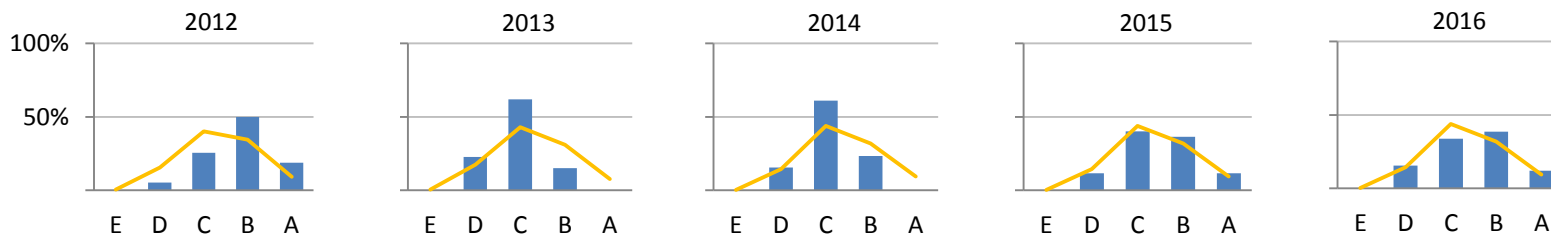
	2012	2013	2014	2015	2016	5 yr
Students	74	79	90	77	83	403
Median	4.0	3.0	3.0	3.0	4.0	3.0
Average (Avg)	3.8	2.9	3.1	3.5	3.5	3.3
World Avg (WA)	3.4	3.3	3.4	3.4	3.4	3.3
(Avg - WA)	+ 0.5	- 0.4	- 0.3	+ 0.1	+ 0.1	+ 0.0
Stat. Significant?	Yes	Yes	Yes	No	No	No

ToK Score Distributions

	Percentages						Counts					
	2012	2013	2014	2015	2016	5 yr	2012	2013	2014	2015	2016	5 yr
A	19%			12%	12%	8%	14			9	10	33
B	50%	15%	23%	36%	39%	32%	37	12	21	28	32	130
C	26%	62%	61%	40%	34%	45%	19	49	55	31	28	182
D	5%	23%	16%	12%	16%	14%	4	18	14	9	13	58
E												

Note: To calculate averages, the following conversions were used: A = 5, B = 4, C = 3, D = 2, E = 1.

ToK Score Distributions by Year



The yellow lines show the shape of the world-wide score distribution.