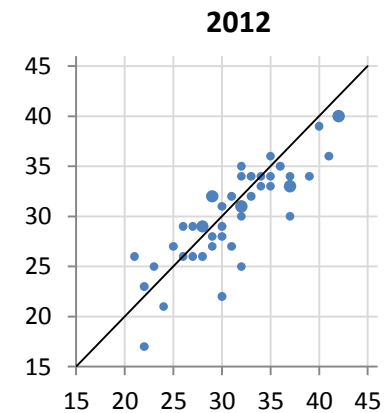
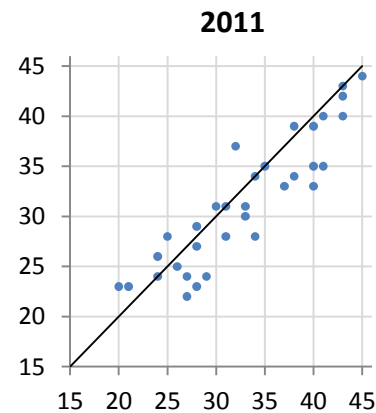
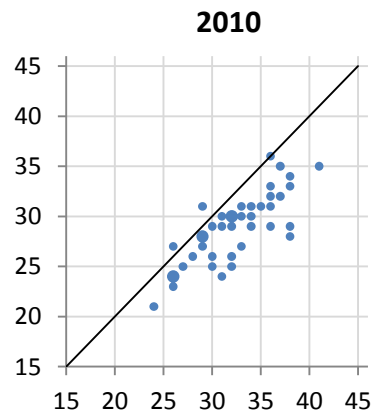
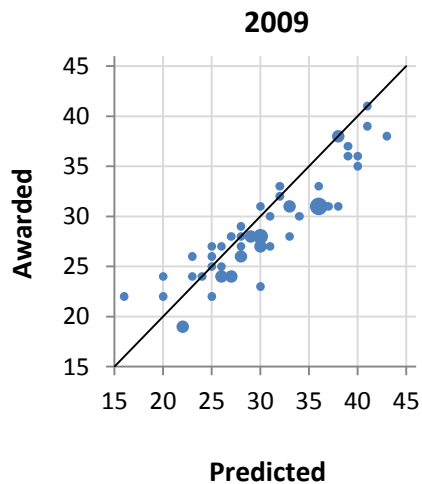
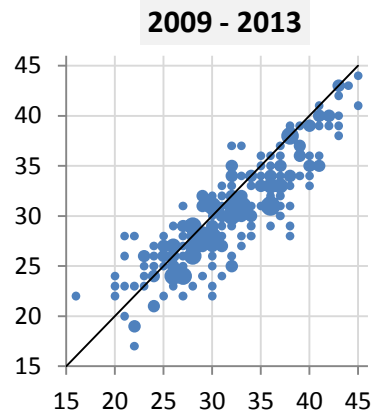
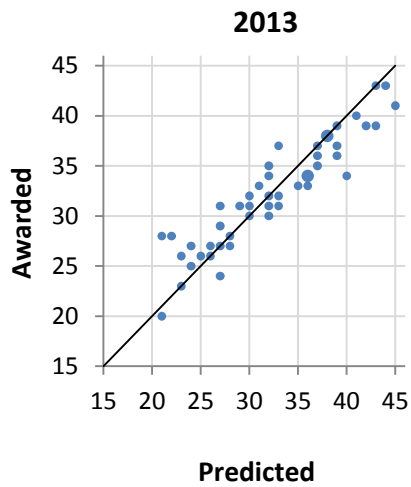


DIPLOMA POINTS

Predicted vs. Awarded - Percentages



	2009	2010	2011	2012	2013	5 yr
Under prediction by						
7+					2%	0%
6	2%				2%	1%
5			3%	2%		1%
4	2%				4%	1%
3	2%		6%	9%	6%	4%
2	4%	2%	6%	9%	10%	6%
1	12%	2%	9%	15%	8%	10%
Perfect prediction	12%	2%	15%	4%	23%	12%
Over prediction by						
1	9%	10%	18%	22%	15%	14%
2	19%	24%	3%	15%	15%	16%
3	16%	15%	12%	4%	8%	11%
4	5%	12%	6%	7%	4%	7%
5	12%	12%	12%	7%		8%
6	2%	7%	6%		2%	3%
7+	4%	12%	3%	7%		5%
Avg Abs Diff between Predicted and Awarded	2.5	3.6	2.6	2.4	1.9	2.6